

PERTH TO DARWIN: A SELF GUIDED MOTORCYCLE TOUR



BEST ADVICE - BEST TOURS - BEST BIKES

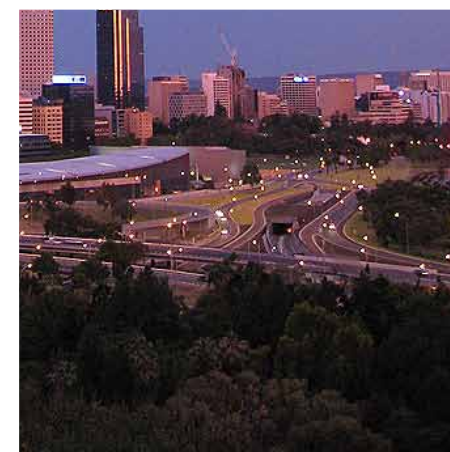
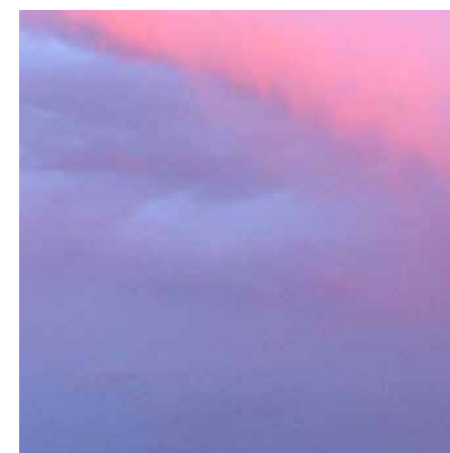
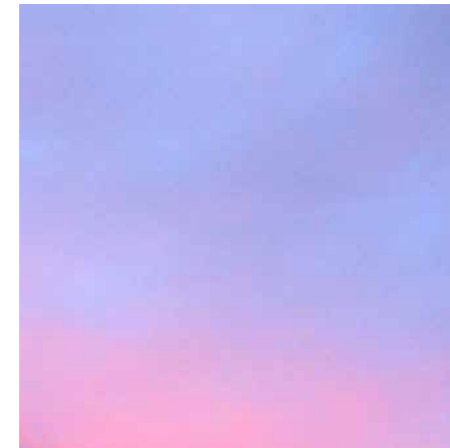
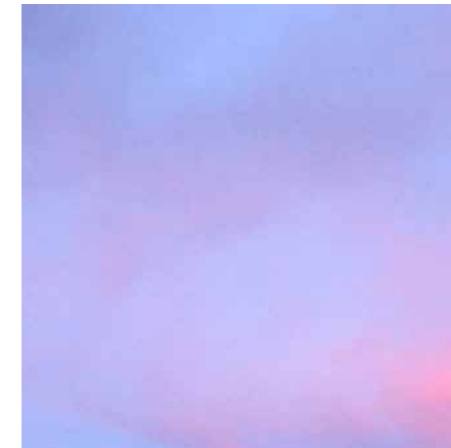
Perth and Fremantle



Perth & Fremantle

Perth is a modern, clean city on the banks of the majestic Swan River. The river feels more like a winding harbour really with Fremantle ('Freo' to the locals) at its entrance. Perth has all you'd expect from a thriving city with great shopping, restaurants and nightlife combined with superb beaches and a sublime climate. The weather is perfect for most of the year with warm winters and hot summers, cooled by the 'Fremantle doctor' sea breeze that comes through most afternoons.

Ranked as one of the 'world's most liveable cities', Perth has charm aplenty even if you're just visiting. A great place to start any motorcycle tour of Western Australia.





Nambung National Park

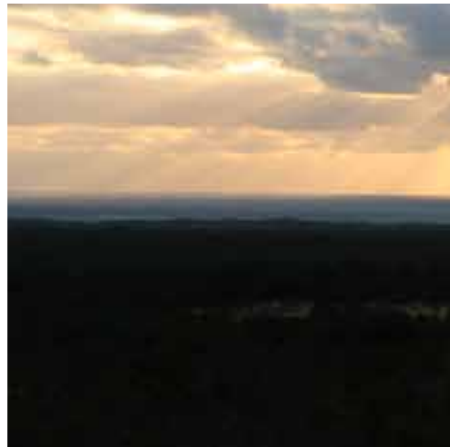




Nambung National Park & The Pinnacles Desert

Named after a local Aboriginal word for 'winding', referring to the Nambung River, this area is now more recognisable for the spectacular limestone formations that jut from the desert floor like so many teeth. The exact process by which the 'Pinnacles' were formed is a matter still under some debate, but what's not up for question is the fascinating spectacle offered by such an unusual landscape.

Cervantes is the nearest settlement nearby offering facilities, and is a great place to base yourself whilst exploring the desert.





Murchison River Gorges & Coast



Murchison River Gorges & Coast

Kalbarri is a lovely small town on the banks of the Murchison River where it flows into the Indian Ocean. It's uniquely blessed with a fascinating array of impressive river gorges, coastal scenery and marine landscapes, with the added bonus of year round amazing weather. A little way south of the town itself are some spectacular beaches, towering crimson coastal cliffs and amazing pink lakes.

This pristine area of natural wonder offers a taste of the mind boggling isolation that the Outback provides, all within easy reach of the congenial town of Kalbarri.





Shark Bay World Heritage Area





Shark Bay World Heritage Area

Rise early in the morning, stroll down to the beach and have a breakfast chat with the famous wild dolphins at Monkey Mia, just a metre or two from the beach! With one eye out of the water they are genuinely interested in who's there and what's going on. It's genuinely a fascinating experience to be able to get that close to wild dolphins, whilst staying mostly dry!

Whilst the dolphins at Monkey Mia are arguably the biggest lure to get you off the north-south highway, there's more to be seen in Shark Bay than just aquatic mammals! On the way into or out of, this World Heritage listed area you can take in the panoramic views of Shark Bay itself from Eagle Bluff and crunch along Shell Beach, a beach made up of billions of tiny cockle shells as far as the eye can see.



Ningaloo Reef & Cape Range National Park



Ningaloo Reef & Cape Range National Park

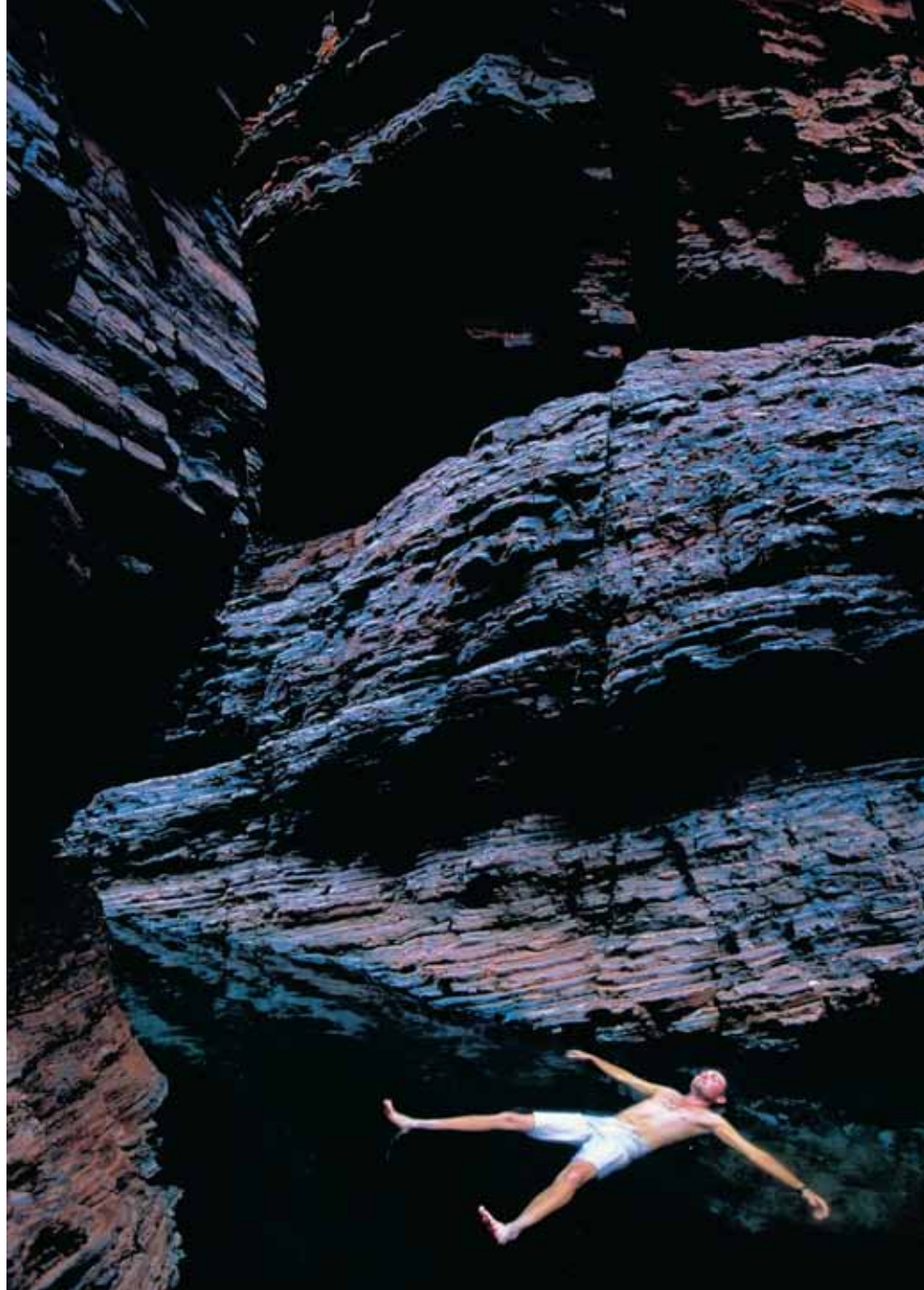
Ningaloo is the longest fringing reef in the world and its isolated location at the top of the west coast, means that it's one of the most pristine too. You can snorkel or dive on the incredible 260km long reef simply by stepping off one of the many deserted white beaches, straight into the amazing underwater world resplendent with over 520 species of fish and 250 species of coral.

One minute you're riding your motorcycle along the shimmering highway, the next you're up close and personal with the spectacular shimmering fish of the Ningaloo Reef!



Karijini National Park





Karijini National Park

This is an optional extension to the Perth to Broome self guided tour, but what an option! If you're going to be late back to work, it may as well be because of something like Karijini! The tropical climate and utterly stunning, rugged, crimson rock canyons and gorges filled with cool, clear water make for a fascinating contrast to the sun baked world above when you descend into them.

There's an easily accessible system of walking trails throughout the park suitable for all levels of experience, plus plenty of waterfalls and pools you can plunge into when you take a break.





Eighty Mile Beach



Eighty Mile Beach

Famous for its endless stretches of pristine white sand fringing the sparkling turquoise ocean, Eighty Mile Beach is aptly named and ideally situated mid-way between Port Hedland and Broome, making for an excellent spot to take an overnight break.

You can roam the shore hunting for shells, perhaps enjoy a spot of fishing, observe the incredible numbers of migratory birds that call past the beach or just kick back, relax and marvel at a spectacular sunset over the Indian Ocean. Why not claim a section of the beach as exclusively your own, there's plenty to go around!



Broome





Broome

The tropical paradise of Broome finally comes into view after the long ride up the west coast, it's a welcome sight and a sparkling pearl on the shores of the Indian Ocean. It has world famous beaches, wonderful sunsets, a fascinating history intertwined with the local pearl fishermen and a fantastic climate for much of the year.

It has all the comforts of a larger holiday town but with a laid back, frontier sort of feel. It's famous for the 'Broome Time' effect. The pace of life noticeably slows when you enter Broome, you relax more, take more time to enjoy yourself and just generally mellow out. It's easy to get absorbed by Broome Time!





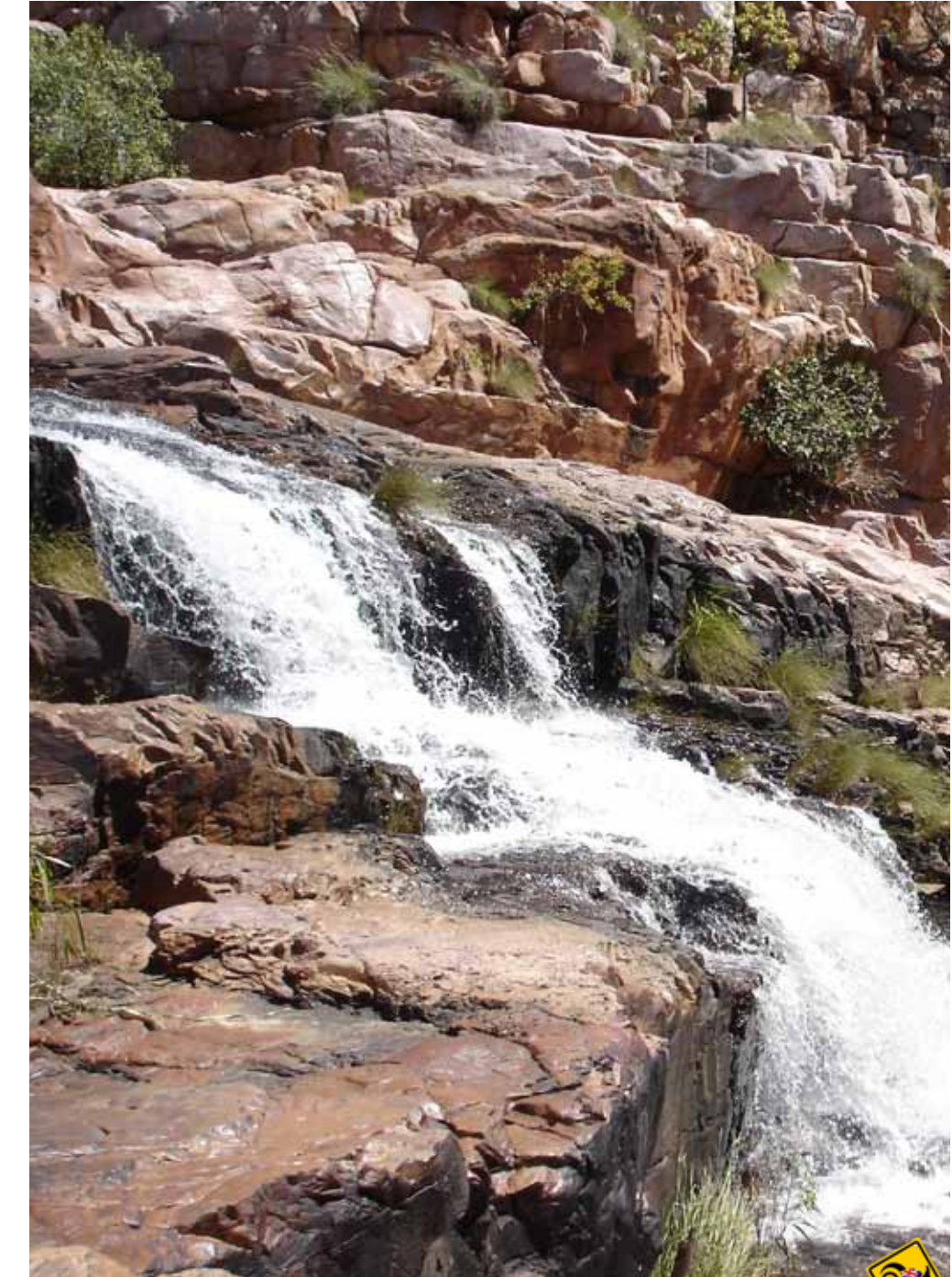
The Kimberley & Gibb River Road



The Kimberley & Gibb River Road

The Kimberley has incredible gorges, vibrant crimson cliffs, unusual boab trees and some powerful rivers that helped shape the region. It's one of the world's last great wilderness areas, almost 423,000 square kilometres in size and is the ideal place to immerse yourself completely in the environment.

In the 'dry' season [usually May to October] you are provided with more options for exploring the area. You can either take the sealed road which skirts around the periphery of the Kimberley or, with the right bike and appropriate experience, be a little more adventurous and ride the Gibb River Road - one of the greatest four wheel drive tracks in Australia. There is a fantastic variety of natural wonders to tempt you along the Gibb River Road. Lennard Gorge, Tunnel Creek and Windjana Gorge are just a small sample of the fantastic sights just waiting to draw you from the highway.





Katherine



Katherine

The third largest town in the Northern Territory, Katherine is most famous for Katherine Gorge one of the most spectacular of local attractions. Located in the Nitmiluk National Park just north east of the town, Katherine Gorge is just one, although arguably the most impressive, of a series of 13 sandstone gorges hewn from the land over billions of years by the Katherine River.

There's a strong Aboriginal link to the area, with many rock art sites dotted about the park. It's the ideal area to take a break from riding the bike and explore in greater depth. There are plenty of options available for the inquisitive rider, but the gorges themselves are best investigated by canoe or a flat bottomed boat.





Litchfield National Park



Litchfield National Park

Petite twin sister to the nearby Kakadu National Park, Litchfield certainly doesn't disappoint! There are some fantastic waterfalls, plunge pools and swimming holes to cool off in, plus a wonderfully secluded atmosphere about the place. Buley Rock hole, Wangi Falls, Surprise Creek and the secluded Tjaynera Falls are just a few of the places you might find yourself lingering too long.

The park is a short ride from Darwin, so you can easily return if you want to spend more time exploring what's on offer.



Kakadu





Kakadu

Incredible wildlife with big saltwater crocodiles, stunning bird life, water buffalo, an amazing variety of plants and trees, vibrant Aboriginal culture, history and natural heritage can all be found in this UNESCO World Heritage listed, wetland paradise. Watching the sunset over the wetlands at Ubirr is a magical experience and exploring the caves and Aboriginal artwork at Nourlangie, some of which dates from 60,000 years ago, provides an amazing insight into the early history of the country.

Covering nearly 20,000 square kilometres, every centimetre of Kakadu is absolutely jam-packed with life at every time of year. It's undeniably the major natural attraction in the 'top end' and since you've ridden all the way here, it's worth spending a little to explore the park properly.





Darwin





Darwin

Capital city of the Northern Territory and tropical paradise on the shores of the Timor Sea. A population of about 130,000 makes it easily the most populated city in the Northern Territory, but the least populated of all Australia's capital cities. This, combined with the delightful tropical climate has led to the creation of a distinctly laid back, multicultural and very mellow sort of place.

Plenty of markets, festivals, restaurants, pubs and an abundance of incredibly welcoming locals makes this one of the finest tropical cities on the planet.

HOW THINGS WORK - Self-guided tours

Self-guided tours are designed to make it as easy as possible for you to arrange your motorbike tour in Australia.

We take away all the trouble and time needed to research and plan the tour, so you can be confident that you'll make the most of your time, see the best the route has to offer and have somewhere great to stay each night. It makes for stress free days on the bike and leaves you to simply enjoy the freedom of riding, marvel at the scenery and soak up the atmosphere.

Self-guided tour costs generally include the bike, accommodation in good quality 3.5 to 4 star bed & breakfast/ motels/resorts and a very detailed itinerary with maps that will tell you the best biking route and things to see on the way.

We know what works on these trips and the pace has been designed for people that like to make good use of the bike, but also enjoy stopping to admire the spectacular scenery, take short walks to things of interest and enjoy local hospitality with a great coffee or lunch at cafés and restaurants on the way.

A typical day is around 350 km but on some days it might be less and others a little more depending on what there is to see. You won't ride the direct routes between cities and towns as they are fast, straight and have little of interest on the way. They are quick and functional but no fun on a bike! The route we'll take you on has fantastic scenery and you'll twist and wind your way along lesser known back roads through each region along the way.

Prior to the tour you'll be sent a **detailed itinerary and briefing pack** telling you all about the history of each area and things you'll likely see during the trip. This will mean you can read all about the tour and do any additional research you might like to do before arriving in Australia.

We love Australia and want to show you the best of it. We are confident you'll leave with the same passion for the country as we have.

Thanks for your interest in these tours and we hope to share Australia with you sometime soon!

Mark

For more information on this, or any of our other tours please visit:
www.bikeroundoz.com
or contact us directly at:
info@bikeroundoz.com



© Copyright BikeRound OZ 2013 All rights reserved.

The reproduction or re-use of any information provided in this document including [but not limited to], images and text is strictly prohibited without permission from the copyright owners.

For more information about this and other tours, please visit: www.bikeroundoz.com